



## RAMS043-Use of Goal Posts



## CONTENTS

Signatories .....	1
Document Revisions .....	1
Summary .....	3
Linked Documents .....	4
Scope of Work.....	4
Design .....	4
Pre Planning .....	4
Tools & Equipment .....	5
Setting up Safety Measures .....	5
Emergency Procedures .....	5
Responsibilities .....	5
Personal Protective Equipment (PPE).....	6
Emergency Procedures .....	7
Install Goal Posts & Barriers.....	7
Maintain.....	9
Remove .....	9
Risk Assessment.....	10
Contact with overhead power lines.....	11
Vehicle/equipment movement.....	11
Defective Equipment .....	11
Ground Conditions.....	11
Falling objects or tools into the danger zone. ....	11
Working on or from the Back of the Vehicle .....	12
Environmental Risk Assessment .....	13
Disposal of Waste .....	14

RAMS043-CEN	
Document Reviewed Date	Next Review Date
16/01/2026	15/01/2027

Under no circumstances is this document to be modified in any way without the QHSE Managers consent  
Uncontrolled when Printed or Downloaded

## SUMMARY

This generic set of RAMs are critical for ensuring safety and preventing accidents when working around overhead power lines.

Key reasons for their importance include:

### **Hazard Identification**

RAMS help identify potential risks, such as electrocution, vehicle contact with power lines, and falling objects, ensuring these are addressed proactively.

### **Legal Compliance**

RAMS ensure compliance with safety regulations and industry standards, protecting workers and the organisation from legal and financial consequences.

### **Clear Procedures**

By outlining detailed methods, such as installing non-conductive barriers and goal posts, RAMS provide step-by-step guidance to maintain safe distances from power lines.

### **Emergency Preparedness**

RAMS include emergency procedures to handle incidents, minimizing harm and ensuring timely responses.

### **Training and Awareness**

RAMS ensure all personnel are trained on hazards and understand their responsibilities, fostering a culture of safety and vigilance.

No-one is to undertake any work around power lines unless training and instruction has been given.

**Any deviation from this RAMS document or any linked documents mentioned below, must be agreed with the Hatton QHSE Manager.**

RAMS043-CEN	
Document Reviewed Date	Next Review Date
16/01/2026	15/01/2027

Under no circumstances is this document to be modified in any way without the QHSE Managers consent  
Uncontrolled when Printed or Downloaded

## LINKED DOCUMENTS

Document Name	Location
PY003-CEN Incident Reporting Policy	Documents/QHSE/Policies/Policies
PY007-CEN Lone Working Policy	Documents/QHSE/Policies/Policies
PY036-CEN Health & Well Being Policy	Documents/QHSE/Policies/Policies
PY053-CEN Personal Protection Policy (PPE)	Documents/QHSE/Policies/Policies
Avoiding danger from overhead power lines Guidance Note (GS6)	Documents/QHSE/Support_Documents/Traffic Management Support Documents

### Notes:

- All the above documents can also be found on the field service tablets, if you are unable to find the document please speak to your Line Manager.
- This set of RAMS MUST be read before undertaking any works around OHL's.

## SCOPE OF WORK

The scope of work involves:

- Identifying and marking overhead power lines (OHL's).
- Installing barriers and goal posts to ensure a safe working environment.
- Monitoring activities to avoid contact with overhead power lines during construction operations.

## DESIGN

When designing for these works the following is to be considered first and foremost

Firstly - Can the risk be removed completely by not working under the lines or limiting the equipment used to a size below the safe clearance distance? This should be identified and discussed with the client.

Secondly - Can the line be turned off during the works, or for short periods to allow the work under the line to be completed?

The legal minimum height for OHL's varies according to voltage, the equipment owner must provide the safe clearance zones. This must be obtained from the client.

Once the safe clearance zones are known then this is to be added to the TM plan. Send the safe clearance details to the tech team and they will add the standard detail required to the plan.

**Remember : For all designs the location, height and safe clearance distance to the cable must be provided by the client, no works are to be undertaken without this information.**

## PRE PLANNING

- Survey the Site - Conduct a thorough site survey to identify all overhead power lines and their locations.

RAMS043-CEN	
Document Reviewed Date	Next Review Date
16/01/2026	15/01/2027

Under no circumstances is this document to be modified in any way without the QHSE Managers consent  
Uncontrolled when Printed or Downloaded

- Obtain Clearance Information - Contact the client to determine the safe clearance distance for working near the relevant power lines.
- Risk Assessment - Perform a risk assessment specific to the tasks to be undertaken.
- Training - Ensure all personnel involved are trained on the hazards of OHL's, the installation of barriers and goal posts and the importance of maintaining safe distances.
- Ensure the barriers and goal posts are inspected before loading the vehicle and work begins.

## TOOLS & EQUIPMENT

- Use equipment with height restrictors or proximity sensors when working near overhead lines.
- Avoid using long-handled tools or ladders that may come into contact with power lines.

## SETTING UP SAFETY MEASURES

### Barriers

- Use highly visible physical barriers such as cones, tape, or fencing to demarcate the danger zone.
- Ensure barriers are set up at a safe distance, following the utility provider's recommendations.

### Goal Posts:

- Install goal posts at entry and exit points to restrict vehicle and equipment movement within the danger zone.
- Use non-conductive materials for goal posts, such as fiberglass or PVC.
- Affix clear warning signs indicating the presence of overhead power lines.

## EMERGENCY PROCEDURES

### Electrical Contact

- Stop work immediately.
- Do not touch the equipment or person in contact with the power line.
- Notify emergency services and the utility provider.

### Evacuation:

- Clear the area and ensure no one approaches the danger zone until it is declared safe.

### First Aid

- Administer first aid only if it is safe to do so.
- Provide CPR if necessary, ensuring no further contact with the live circuit

## RESPONSIBILITIES

### Supervisor

- Ensure all safety measures are in place and followed.

RAMS043-CEN	
Document Reviewed Date	Next Review Date
16/01/2026	15/01/2027

Under no circumstances is this document to be modified in any way without the QHSE Managers consent  
Uncontrolled when Printed or Downloaded









- Communicate with clients, utility providers and manage work permits.

Workers/Operators:

- Follow safety instructions and report any hazards or unsafe conditions.
- STOP works if any hazards or unsafe conditions materialise and contact you or Supervisor or Line Manager

## PERSONAL PROTECTIVE EQUIPMENT (PPE)

Minimum requirements for these RAMS are for all personnel when carrying out works around OHL's

Hard Hat	Eye Protection	Hi-Vis Clothing	Safety Gloves	Safety Boots
				
Colour dependent on role, with 4-point chin strap that meet EN397 & EN12 492 standards. Head torch to be worn for night working and poor visibility	Safety glasses or goggles  To be worn for task specific work or when required by client / site	Long sleeve Hi-Vis Jacket EN 20 471 class 3  Hi-Vis trousers EN ISO 20 471 class 1	Minimum of cut level F	(laced only) metatarsal if required by client / contractor  S3 steel toe cap with ankle support
Black		White		Blue
				
SMSTS Managers and SSSTS Supervisors		General use, Managers, Clients and Competent Operatives		Trainee workers and Site visitors

<b>Note</b>	The above PPE requirements apply to either Yellow or Orange (this could depend on Client's requirements). PPE is to be clean, fit for purpose and identifiable with the company logo.
-------------	---

RAMS043-CEN	
Document Reviewed Date	Next Review Date
16/01/2026	15/01/2027

Under no circumstances is this document to be modified in any way without the QHSE Managers consent  
Uncontrolled when Printed or Downloaded

Note: The above PPE requirements apply to either Yellow or Orange (this could depend on Clients requirements)

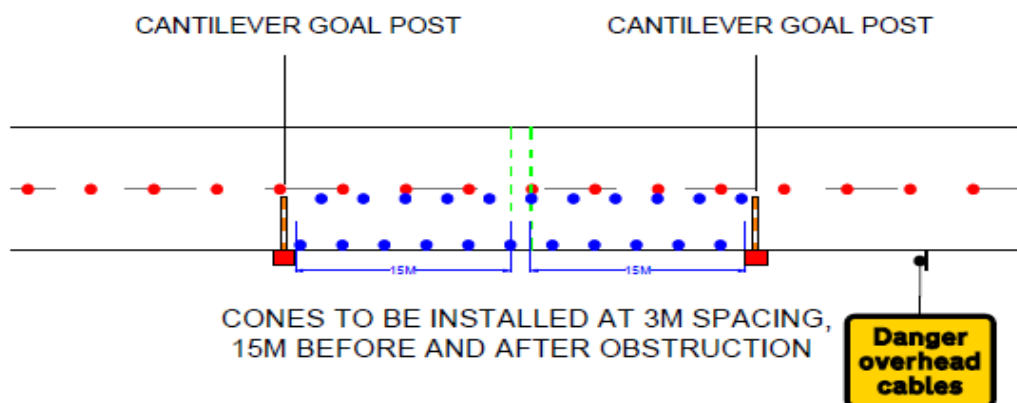
Note: PPE is to be clean, fit for purpose and identifiable with the company logo.

## EMERGENCY PROCEDURES

- Stop all works, and make the site safe
- Call the emergency services if needed.
- Onsite Supervisor/site manager to be informed ASAP.
- Take pictures of the site and incident area
- All incidents are to be reported through the Notify Reporting IM APP and immediately to the QHSE Department.
- Investigation to be started by the Supervisor/Line Manager
- Site not to be entered until safe to do so.

## INSTALL GOAL POSTS & BARRIERS

- Clearly mark the danger zones this is the area beneath and around the OHL's where barriers and goal posts are to be installed.



### Set Up Barriers

- Use cones, fencing, or tape to create a continuous perimeter around the designated area.
- Position barriers at the recommended safe distance from the power lines, as advised by the Client/utility provider.
- Place warning signs along the barriers to alert personnel and visitors.
- Ensure the goal posts and barriers are stable, visible, and correctly positioned before commencing work.

RAMS043-CEN	
Document Reviewed Date	Next Review Date
16/01/2026	15/01/2027

Under no circumstances is this document to be modified in any way without the QHSE Managers consent  
Uncontrolled when Printed or Downloaded

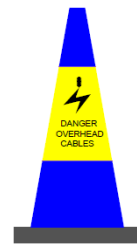
**Cones and Signage**

- A sign detailing exclusion zone Start and Exclusion zone End is to be installed to show the required exclusion zone for the cable size. This is provided by the client.



Note: client specific signs may be required

- A run of blue cones with a fluorescent sleeve showing “danger electrical cables above” to be installed 15 meters on either side of the OHL’s, cones are to be installed at 3m centres.



**Assemble Goal Posts**

- Use non-conductive materials such as fiberglass poles.
- Secure the base of each post firmly to the ground to prevent movement using sandbags.
- Attach crossbars at an appropriate height to prevent over-height vehicles or equipment from entering the danger zone. (Add reflective or brightly coloured tape to improve visibility)

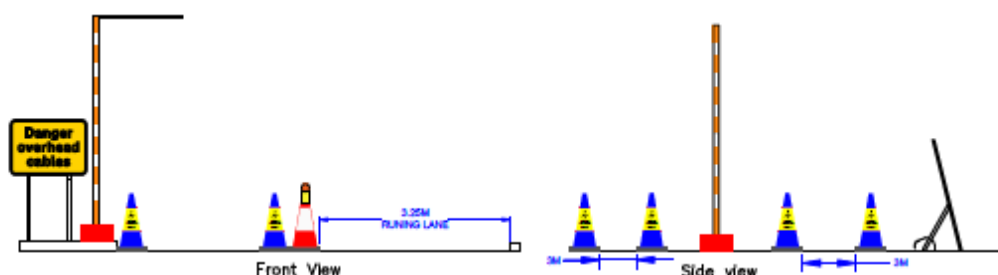
Note: For works on Single Carriageways bunting is not to be used and a single cantilever goal post is to be used.

- Extend the goal post (**Away from the overhead line or any other overhead obstruction**) along the ground to the correct height required.

RAMS043-CEN	
Document Reviewed Date	Next Review Date
16/01/2026	15/01/2027

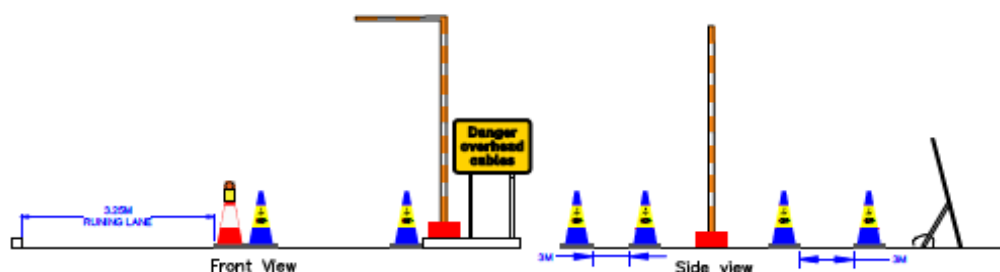
Under no circumstances is this document to be modified in any way without the QHSE Managers consent  
Uncontrolled when Printed or Downloaded

- Lift the goal post into its base ensuring it is lifted safely and securely. Keep in mind any wind or moving vehicle and plant in the area.



Typical Nearside Lane layout

Typical Offside Lane layout



## MAINTAIN

- Check the goal posts during the shift to ensure they are still in place and are clearly visible.
- Ensure the height clearance has been maintained
- Sandbags are still in place, not damaged and there is the required quantity being used for the weather conditions

## REMOVE

- Unclip the post to lower it to its storage height.
- Remove the sandbags from the base.
- Remove all over installed TM equipment
- Load the equipment onto the TMIV from the non-live traffic side.
- Secure all equipment on the vehicle with straps.
- Check the works area to ensure its safe, clean and no equipment has been left

RAMS043-CEN	
Document Reviewed Date	Next Review Date
16/01/2026	15/01/2027

Under no circumstances is this document to be modified in any way without the QHSE Managers consent  
Uncontrolled when Printed or Downloaded

## RISK ASSESSMENT

The following risk assessments are based on changing a wheel, the following operational hazards and risks provide a general indication of what may be encountered on these works.

If at any point throughout your work, you encounter an unsafe situation you **MUST** stop work and contact your Supervisor immediately for guidance.

- If ANY risk is **HIGH**, **do not proceed with the operation**, abandon the job or look into doing it a different way.
- If ANY risk is **MEDIUM**, **proceed only with caution**, introduce additional controls, where possible.
- If ALL risk is **LOW**, **proceed with work**.

Likelihood Categories		Severity Score				
Category	Description	1	2	3	4	5
A	Extremely Unlikely					
B	Unlikely					
C	Occasional					
D	Likely					
E	Expected					
Severity Score Descriptions						
1	Minor injuries/inconveniences. Employee can continue to work. Short term local damage					
2	Minor injuries. Operative requires first aid treatment. Stops work. Medium term local/short term regional damage.					
3	Reportable/LTI or illness Long term local/regional damage					
4	Major injury or illness with long term effects Long term widespread damage					
5	Fatalities Widespread permanent damage					
Action Required						
Low Risk	Check that no other risks can be eliminated by modifications of design then proceed with design. Record residual risks					
Medium Risk	Reduce risks as far as reasonably practical. Consider alternative design or construction method. If alternatives are not available, specify precautions to be adopted. Record residual risks.					
High Risk	Seek alternative solutions. If alternatives are not available, specify precautions to be adopted & advise Senior Management & Supervisor (if appropriate). Record residual risks					
Hazard Phase Codes				Examples of Persons at Risk		
SIS	Site Investigation/Survey			Inexperienced (I)		
OD	Outline Design			Vulnerable Road Users (VRU)		
DD	Detailed Design			Public (P)		
C	Construction			Cyclists (C)		
CMT	Commissioning /Testing			Lone workers (LW)		
O	Operation			TM Operative (TMO)		
M	Maintenance			Site Personnel (SP)		
D	Demolition/Decommissioning/Dismantling			All		

RAMS043-CEN	
Document Reviewed Date	Next Review Date
16/01/2026	15/01/2027

Under no circumstances is this document to be modified in any way without the QHSE Managers consent  
Uncontrolled when Printed or Downloaded

Hazard(s)	Persons at Risk	Risks	PRE-RCM			Risk Control Measures (RCM)	POST-RCM		
			Likelihood	Severity	Risk		Likelihood	Severity	Risk
Contact with overhead power lines	O	1. Electrocution or electrical burns from contact with power lines.	D	5	H	a. All operatives to be given familiarisation training prior to use. b. A competent person should carry out an inspection prior to allowing vehicles to pass through the goalposts. c. Maintain minimum clearance distances. d. Install barriers and goal posts. e. Designate a spotter if required.	A	5	M
Vehicle/equipment movement	O	1. Vehicle or equipment contact with power lines.	D	5	H	a. Use height restrictors and proximity sensors. b. Provide driver/operator training. c. Enforce a speed limit near overhead power lines.	A	5	L
Defective Equipment	O	1. Injuries, cuts and fractures.	C	3	M	a. Pre-use inspections of the equipment to be carried out. b. Defective/damaged equipment not to be used. c. After use ensure that the equipment is cleaned and stowed in a responsible manner.	A	3	L
Ground Conditions	O	1. Goalposts falling over could cause injury to works and public	C	3	M	a. Assess ground conditions and apply adequate weight to the base plate prior to use. b. Use pre-drilled holes in base plate if required to secure	A	3	L
Falling objects or tools into the danger zone.	O	1. Falling objects/tools	C	3	M	a. Use tool lanyards; ensure proper tool storage. b. Restrict overhead work near power lines where possible.	A	3	L

RAMS043-CEN	
Document Reviewed Date	Next Review Date
16/01/2026	15/01/2027

Under no circumstances is this document to be modified in any way without the QHSE Managers consent  
Uncontrolled when Printed or Downloaded

Hazard(s)	Persons at Risk	Risks	PRE-RCM			Risk Control Measures (RCM)	POST-RCM		
			Likelihood	Severity	Risk		Likelihood	Severity	Risk
Working on or from the Back of the Vehicle	O	<ol style="list-style-type: none"> <li>1. Falls</li> <li>2. Struck by Objects</li> <li>3. Manual Handling</li> <li>4. Moving Vehicles</li> <li>5. Environmental Factors</li> </ol>	B	3	M	<ol style="list-style-type: none"> <li>a. The TMO(s) <b>MUST</b> not enter the back of the TMIV vehicle without the fall arrest bars/straps in place.</li> <li>b. The TMO(s) is to use the handrails and steps on the TMIV that are provided.</li> <li>c. TMO(s) to keep three points of contact when entering or exiting the rear of the TMIV.</li> <li>d. The TMO(s) <b>MUST</b> not jump down from the vehicle at any point.</li> <li>e. The TMO is not to be located on the back of the TMIV when it is in motion.</li> <li>f. If laying cones from the IPV well, all guards <b>MUST</b> be in place.</li> <li>g. TM Equipment <b>MUST</b> be stowed away and secured when not unloading or when vehicle is moving.</li> <li>h. TMO(s) only to remove equipment from non-live traffic side of the TMIV.</li> <li>i. TMO(s) <b>MUST</b> wear safety boots that are S3 SRC rated slip resistant Sole compliant.</li> <li>j. TMO(s) to ensure that the TMIV work lights are switched on when working on the back of the vehicle in poor weather conditions or at night.</li> <li>k. TMO(s) to ensure that that their boots are free from mud, snow before entering or exiting the TMIV.</li> </ol>	A	3	L

RAMS043-CEN	
Document Reviewed Date	Next Review Date
16/01/2026	15/01/2027

Under no circumstances is this document to be modified in any way without the QHSE Managers consent  
Uncontrolled when Printed or Downloaded

## ENVIRONMENTAL RISK ASSESSMENT

- If ANY risk is **HIGH**, **do not proceed with the operation**, abandon the job or look into doing it a different way.
- If ANY risk is **MEDIUM**, **proceed only with caution**, introduce additional controls, where possible.
- If ALL risk is **LOW**, **proceed with work**.

Control		Severity Score				
		Insignificant /Positive	Minor	Moderate	Major	Severe
Category	Rating Description	1	2	3	4	5
<b>A</b>	<b>High degree of control</b>					
<b>B</b>	<b>Medium degree of control</b>					
<b>C</b>	<b>Moderate degree of control</b>					
<b>D</b>	<b>Slight degree of control</b>					
<b>E</b>	<b>Negligible degree of control</b>					
Severity Score Descriptions						
<b>1</b>	All aspects fully controlled or have negative effect upon the environment					
<b>2</b>	Aspects exist at recognisable levels, which may impact on the environment; but any change is easily recoverable with no lasting effect					
<b>3</b>	Will have an effect on the environment. Damage is short term and is always recoverable					
<b>4</b>	Major Impact. Damage is not permanent, but may take some time to remedy					
<b>5</b>	High Impact. Risk of severe environmental damage					
Action Required						
<b>Low Risk</b>	Low impact identified - Control measure to be adopted and monitored					
<b>Medium Risk</b>	Medium impact identified - Ensure that the aspect & impact assessment is reviewed, further controls may be necessary					
<b>High Risk</b>	High impact identified - Re-evaluate the aspect & impact assessment and develop / determine greater controls					
Hazard Phase Codes				Examples of Receptor		
<b>SIS</b>	Site Investigation/Survey			Air (A)		
<b>OD</b>	Outline Design			Land (L)		
<b>DD</b>	Detailed Design			Water (W)		
<b>C</b>	Construction			Natural Resources (NR)		
<b>CMT</b>	Commissioning /Testing			Community/Residence/Pedestrians (CRP)		
<b>O</b>	Operation			Operative (O)		
<b>M</b>	Maintenance			Ecology /Habitat (EH)		
<b>D</b>	Demolition/Decommissioning/Dismantling			All		
Key Environmental Issues						
Local effects of Pollution (air quality, noise, waste, lighting, odour)			Carbon emissions and greenhouse effect global warming			
Water source and ocean Pollution			Deforestation, soil erosion and land quality			
Material resources & Land despoliation, supply chain issues & inequal disruption to impacts			Energy Supplies, innovations in food and fuel			
Waste and International waste trade			Agricultural issues arising from global trade			
Climate change and extreme weather events			Biodiversity loss			

RAMS043-CEN	
Document Reviewed Date	Next Review Date
16/01/2026	15/01/2027

Under no circumstances is this document to be modified in any way without the QHSE Managers consent  
Uncontrolled when Printed or Downloaded

# RAMS043-CEN

## Use of Goal Posts (Generic)



Item	Activity	Phase Code(s)	Aspect	Receptor	Potential Impact	PRE-Risk Control Measures			Risk Control Measures	POST-Risk Control Measures		
						Control	Severity	Risk		Control	Severity	Risk
1	Disposal of Waste	O	Failure to follow waste hierarchy Failure to comply with Duty of Care Avoidance of disposal of waste	All	Local effects of Pollution (air quality, noise, waste, lighting, odour) Water source and ocean Pollution, Waste and International waste trade Deforestation, soil erosion and land quality, Biodiversity loss	B	3	M	a. Waste that is generated from this operation is to be brought back to the depot if on site to dispose of within the waste receptacles. b. Any waste generate at depot level needs to be disposed of correctly using the correct waste receptacles c. A Contractor GoGreen manages waste. d. Reports are generated by the QHSE Manager and reported on at the Senior Management QHSE meetings e. Weekly walk around checks are carried out within the depots to ensure waste is in the correct areas	A	3	L

RAMS043-CEN	
Document Reviewed Date	Next Review Date
16/01/2026	15/01/2027

Under no circumstances is this document to be modified in any way without the QHSE Managers consent  
Uncontrolled when Printed or Downloaded